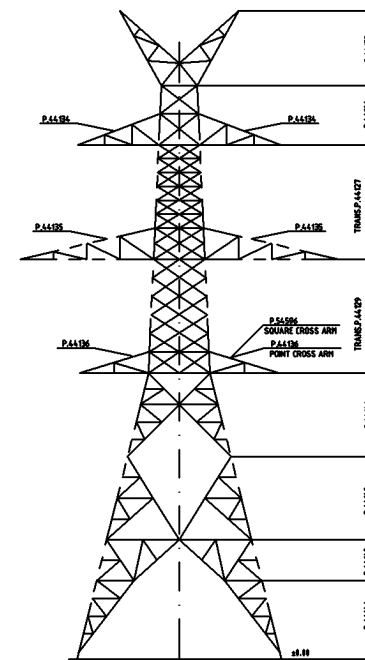


BOLTS	FOR ONE CROSS ARM
M16x25	6
M16x41	2
M16x55	26
M16x51	10
M16x55	7
M16x68	2
M20x45	18
M20x58	18
M24x68	22
M24x79	6
M24x88	12
M30x110	8

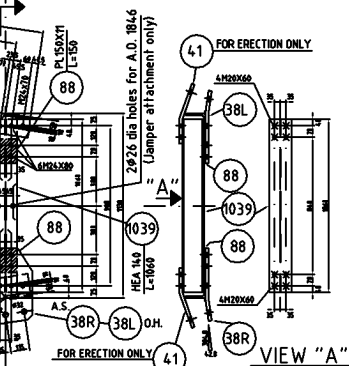


NOTES

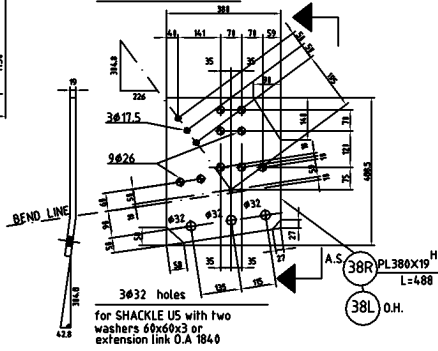
HOT DIP GALVANIZED  
H.- HIGH TENSILE STEEL, M.- MILD STEEL  
ALL HOLES AS FAR AS NOT BEING EXACTLY DIMENSIONED  
ALL BOLTS TO BE HIGH TENSILE STEEL  
NUTS, WASHERS OF MILD STEEL  
H. AND K.- COLD ROLL FORMED SECTIONS  
L.- NOT ROLLED SECTIONS

**NOTES**

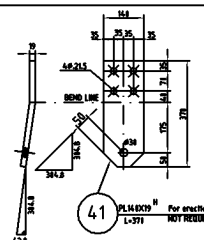
1. For general notes see diag. P-44125.
2. For top part see diag. P-44125 - P-44126.
3. For bottom part see diag. P-44148 - P-44149.
4.  $\pm 17.5$  mm dia holes for 25mm dia ball/cul edge 25 mm unless noted
5.  $\pm 21.5$  mm dia holes for 25mm dia ball/cul edge 31 mm unless noted
6.  $\pm 24$  mm dia holes for 25mm dia ball/cul edge 42 mm unless noted



SECTION C-C



SECTION A-A

[illegible]